

# NF 048

## MICROLITRE AND HAEMATOCRIT CENTRIFUGE



NF 048 is a compact centrifuge that can be used both as microlitre and haematocrit centrifuge.

With its microlitre rotor accepting small capacity tubes up to 2 ml, NF 048 is ideal for hospitals and research laboratories and for applications such as pelleting of DNA and protein, DNA amplification, enzyme tests, centrifugation of cells, yeast and microorganisms at high speed.

When NF 048 is operated with its haematocrit rotor, it can be used for determining the haematocrit volume by means of the centrifugation of blood samples in capillary tubes.

The body, lid and chamber of NF 048 is made of epoxy-polyester powder coated steel which means that the centrifuge is resistant to external and internal effects.

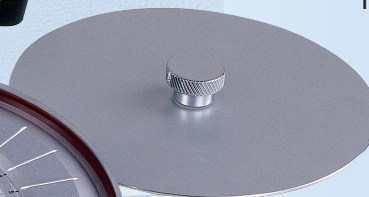
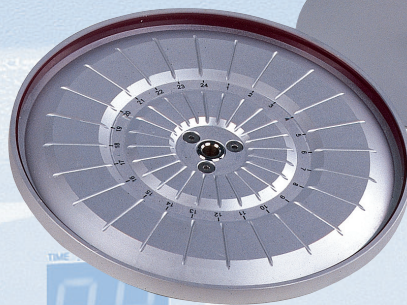
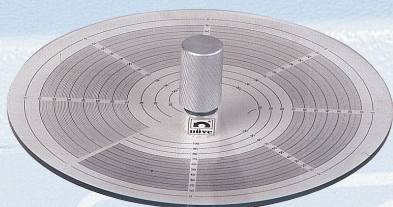
The centrifugation time and speed/RCF are controlled by reliable and accurate microprocessor control system. Programming of speed and time parameters is very easy and there are highly visible digital displays for both parameters.

NF 048 ensures minimum increase of sample temperature by means of the continuous air flow system through the air channels in the lid.

By means of the lid locking system, the lid can not be opened while the rotor is spinning and the program can not be started if the lid is open or not closed well.

Quiet and brushless induction motor of NF 048 has a very high performance and the motor accelerates the rotor to the maximum speed in a very short time. The motor is protected against over heating. There is a pulse key for short centrifugation requirements.

The microlitre rotor is made of polypropylene which is resistant to a wide range of chemicals and can be autoclaved.



## TECHNICAL SPECIFICATIONS

	NF 048
Maximum Speed	Angle (Microlitre): 14,000 rpm Haematocrit : 12,000 rpm
Maximum RCF	Angle (Microlitre): 18,188xg Haematocrit : 14,811xg
Maximum Capacity	Angle (Microlitre): 24x1.5/2 ml Haematocrit : 24xcapillary tube
Control System	Programmable Microprocessor Control System
Speed Set Range	1,000 - 14,000 rpm
Speed Set Step	10 rpm
Timer Set Range	1 - 99 min. and hold position
Timer Set Step	1 minute
Motor	Maintenance-free, brushless induction motor
Power Supply	230 V, 50/60 Hz.
Maximum Power	450 W
Overall Dimensions (WxDxH) mm	275x355x240
Packing Dimensions (WxDxH) mm	350x420x460
Net/Gross Weight, kg	13/17

## ROTORS

Cat. No	Rotor Type	Capacity	Max. Tube Dia. (mm)	Radius (mm)	Max.Speed (rpm)	Max. RCFxg
B 50 019	Angle(Microlitre)	24x1.5/2 ml	11	83	14,000	18,188
B 50 020	Haematocrit	24xcapillary tube	0.75	92	12,000	14,811

## ADAPTORS FOR 24x1.5/2 ml ANGLE (MICROLITRE) ROTOR

Cat. No.	Description	Capacity	Max. Tube Dia. (mm)
A 14 005	Adaptor	1x500/800 µl	8
A 14 006	Adaptor	1x200 µlPCR	6.5
A 14 007	Adaptor	1x250/400/700 µl	6



We reserve the right to modify the design and description

ISO 9001:2008  
ISO 13485:2003

Distribuito da:  
Zetalab s.r.l.  
Via Castelfidardo, 11 - 35141 Padova  
Telefono 049 2021144 - Fax 049 2021143  
Internet: www.zetalab.it - e-mail: info@zetalab.it