

# Formaldemeter htV-m

## Formaldemeter *htV-m*

### SPECIFICATION

**Sampling Method:** 10ml snatch-sample of air taken by internal pump.

**Sampling Frequency:** 2 minutes in normal IAQ conditions.

**Response Time:** 60 seconds in 'high accuracy' mode, approx. 8 seconds in 'lower accuracy' mode.

**Operating Range:** 0-40°C, 15-90% RH

**Mechanical:** 150 x 80 x 34mm ABS plastic case. Padded accessory case 313 x 265 x 77mm.

**Weight:** 300g with 9v PP3 alkaline battery  
Total kit weighs 1.2 Kg.

### FORMALDEHYDE SENSOR

**Type:** Electrochemical manufactured by PPM Technology.

**Concentration Range:** 0-10ppm as standard (0- 12.3 mg/m<sup>3</sup> at 25°C). Extended range available on request.

**Resolution:** 0.01 ppm

**Precision:** 2%

**Accuracy:** 94% of all instrument readings meet the NIOSH criteria for an acceptable method when measuring 0.3ppm of formaldehyde over a relative humidity range of 25-70%. The NIOSH criterion for acceptability is that all results fall within  $\pm 25\%$  of the true value at the 95% confidence level.

**Calibration:** By user with supplied calibration standard or by original manufacturer.

Indoor Air Quality is becoming more prominent and recognized throughout many different industries. It has become essential to be able to accurately monitor low levels of carcinogenic formaldehyde gas.

The Formaldemeter *htV-m* offers precise 3-parameter monitoring for low levels of formaldehyde vapours under extremes of temperature and humidity including these impressive features:



- A built in non-volatile memory that can be upgraded.
- Capable of up to one month of continuous monitoring.
- A real time clock.
- Built in alarm sounder.
- Mains or battery powered.
- Can be used as a manual hand held and a continuous monitoring data logger.
- USB interface allowing direct connection to a PC for downloading of data.
- Supplied with the *htV-m* Download Software.

The *htV-m* can precisely measure formaldehyde concentrations in parts per million (ppm) and mg/m<sup>3</sup> over a wide range of temperature and humidity. Fast and easy to use, pressing a single button gives an immediate indication of concentration levels. The Formaldemeter *htV-m* is reliable and simple to calibrate. The compact size means the *htV-m* is small enough to be used as a hand held device. The built in memory and real time clock enables the *htV-m* to log all 3 parameters and corresponding times, allowing improved monitoring and analysis opportunities.

Alternatively the *htV-m* can be used as a continuous monitor; a PC can automate the sampling and log data at specific times by a direct or wireless connection. This is advantageous as it allows the user more freedom and is a cost effective approach to taking such measurements.

Distribuito da:  
Zetalab s.r.l.  
Via Umberto Giordano, 5 - 35132 Padova  
Tel. 049/2021144 - Fax 049/2021143  
[www.zetalab.it](http://www.zetalab.it) - [info@zetalab.it](mailto:info@zetalab.it)

# Formaldemeter htV-m

## TEMPERATURE & HUMIDITY MODULE

Interchangeable digital CMOSens®

Accuracy:  $\pm 0.4^{\circ}\text{C}$ ,  $\pm 3\%$  RH  
Optional upgrade to  $\pm 0.3^{\circ}\text{C}$ ,  $\pm 1.8\%$  RH

Calibrated to ISO/IEC17025 by manufacturer. Traceable by NIST and NPL.

## KIT CONTENTS

Formaldemeter htV-m

Formaldehyde Calibration Standard

USB Cable

Pack of phenol filters (10)

Digital copy of manual

User Quick Guide

Universal 12V power supply

Certificate of calibration and compliance

htV-m Download Software

## SERVICES AVAILABLE

Technical & Hardware Support

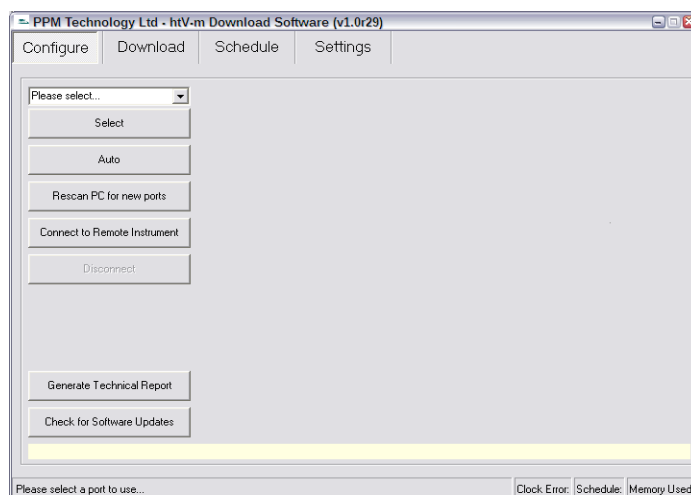
Calibration & Service

Upgrades

Bespoke System Development



## htV-m Download Software



The htV-m download software allows you to download data from the Formaldemeter htV-m unit quickly and easily.

The software features the ability to adjust the sampling schedule to your desired time and frequency settings.

Data can be downloaded by USB or WiFi (if fitted) and saved in a variety of formats.

## Features



Easy to use,  
4-button interface



DC and USB  
connection



Built in Stand



## Optional Extras

### WiFi MODULE:

For downloading data from remote locations without the use of cables.

### SPECIAL MANIFOLD VALVE:

For sampling high concentration in harsh conditions.

Distribuito da:  
Zetalab s.r.l.  
Via Umberto Giordano, 5 - 35132 Padova  
Tel. 049/2021144 - Fax 049/2021143  
www.zetalab.it - info@zetalab.it