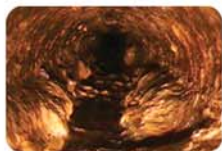


High-Definition VideoScope

HDV600
Series



Home Inspection • Industrial Manufacturing • Automotive/Aerospace • HVAC/Environmental • Safety/Security



HIGH DEFINITION VIDEOSCOPIES

Inspect More. See More.

Introducing the HDV600 Series from Extech

From the makers of the best test and measurement instruments comes a new generation of high-definition inspection cameras. Introducing the HDV600 videoscopes, designed for ruggedness, upgradable versatility, and high-definition clarity. HDV600 videoscopes feature a large color display, SD memory, LED illuminated handset probes, and glove-friendly controller handsets.

Inspect more, see more, and find more with the Extech HDV600 VideoScope Series.

Ruggedly Reliable by Design



Extech's durable display unit is built for tough job sites, ready to handle the unexpected drop off a ladder, or torrential

rains at an outdoor facility. The HDV600 main display unit features a large 5.7"/14.5 cm LCD monitor (5.3"/13.5cm viewable) that is easy to view in bright outdoor sites, cramped and poorly lit industrial spaces, or aircraft maintenance facilities.



- **Waterproof display unit**
- **Oil and chemical resistant**
- **Drop-proof to 2 meters (6.5')**
- **Ergonomic, adjustable grips**
- **Left/right hand controls**

HDV600 is optimized for a wide range of industries

- **Industrial Processing & Manufacturing**
- **Heavy Equipment**
- **HVAC/Boilers**
- **Aerospace**
- **Government & Security**
- **Insurance**
- **Mining and Aggregate**
- **Aviation AOG and FBO**
- **Power Generation**
- **Building Inspection & Commissioning**
- **PetroChem/Refineries**
- **Infrastructure**

Find More.



Remarkable Images and Video

Capture clear images and video you can use to quickly find and document problems.



Select optics that are ideal for your job requirements. Record nearly 15,000 images or up to 4 hours of video on an easy to transfer SD memory card. Plus, audio annotations can be added to video clips, helping to minimize note-taking.

Optics for Every Application

Learn how different optical camera tips available with the HDV600 videoscopes satisfy varying job requirements. Decide if one or both is right for your job knowing the HDV600 Series offers different optics mated to a range of probes.

Macro Lens
0.59" - 2.36"
(20 - 60 mm)

Long Focus Lens
2.36" - ∞
(60 mm - ∞)

Macro (Short Focal Length) Lenses permit you to examine features and attributes that are up-close to the optical camera tip as illustrated above. For detail-intensive applications, such as turbine blade or boiler tube inspections, where up-close viewing is essential, select a macro tip with a diameter that is compatible with the width of access points or orifices available.

Long Focus Lenses permit you to see further in confined areas. These are ideal for viewing concealed areas or large, otherwise inaccessible locations where areas needing inspection may not be immediately adjacent to the optical tip.



Top:
USB, microphone, SD, video out, reset and AC inputs

Left:
Probe connector

- **640 x 480 VGA pixel resolution***
- **Macro & long focal length optics available**
- **Easy-to-transfer SD card**
- **15,000 JPEG images**
- **Up to 4 hours AVI video**
- **30 fps frame rate (NTSC & PAL)**
- **Audio annotation**

* 320 x 240 for 4mm camera



All HDV600 optical camera tips are designed with bright, integrated LED lighting, useful for illuminating dark locations or concealed components.



Articulated 6mm scopes dramatically expand viewing capabilities with 240° (120° left, 120° right) articulation control.

Large, glove-friendly, articulation control knob with adjustable resistance enables inspections in any environment.



HDV600 Handset Controllers: More Convenience. More Control

Access impressive versatility with a range of options designed to ensure the right scope for the job, without sacrificing upgrade ability. In addition to probes which connect directly to the main display unit, handset-mounted probes make it easier than ever to inspect difficult-to-access areas.

Options include:

- Scope probes connected to videoscope main unit
- Wired handset scope probes (also available separately)
- Wireless handset scope probes for inspections up to 10m away (also available separately)
- Articulating handset probes (wired and wireless models available)
- Semi-rigid, flexible, and long-length scopes available
- Scope lengths range from 1m to 30m
- 4-25mm diameter optics including macro and long focal length options



HDV600 Kits

All components are available individually and as kits

Display-mounted Scope Probes

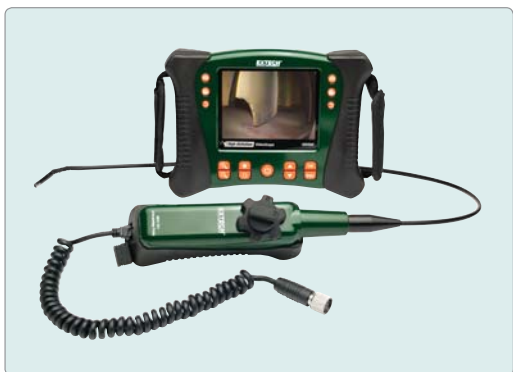


HDV610 VideoScope with 5.5mm diameter flexible probe (1m length)



HDV620 VideoScope with 5.8mm diameter semi-rigid probe (1m length)

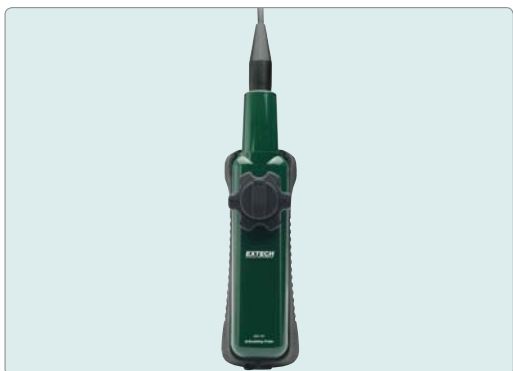
Handset-Mounted Scope Probes



HDV640 VideoScope, wired handset & 6mm diameter semi-rigid articulated (240°) probe



HDV640W VideoScope, wireless handset & 6mm diameter semi-rigid articulated (240°) probe



HDV-TX1, HDV-TX2 Wired handset with 6mm diameter semi-rigid articulated (240°) probe (1m, 2m versions)



HDV-WTX Universal wireless handset, accepts several scopes of varying diameters, lengths, and flexibility

HDV600 Sample Images



VideoScope Selector Guide Use this guide to evaluate all available configuration options

Features to look for	Complete Videoscope Kits				Optional Articulated Handsets with Probe				Optional Universal Handset w/o Probe			
	HDV610	HDV620	HDV640	HDV-640W	Wired		Wireless			Wireless	HDV-4CAM-1FM	HDV-4CAM-5FM
					HDV-TX1	HDV-TX2	HDV-WTX1	HDV-WTX2				
Videoscope with probe mounted to main display unit	●	●	▲	▲	—	—	—	—	—			
Videoscope with probe mounted to a remote handset	▲	▲	●	●	■	■	■	■	■			
Videoscope with probe mounted to a wireless remote handset (10m range)	▲	▲	▲	●	—	—	■	■	■			
Probe with 240° articulating control for expanded viewing angles	▲	▲	●	●	■	■	■	■				
Probe length (meters)	1	1	1	1	1	2	1	2	■	1	5	
∅ Lens diameter (mm)	5.5	5.8	6	6	6	6	6	6	■	4	4	
Macro/short focal length (M) lens for up-close detail or long focal length (L) to inspect larger voids	M	M	M	M	M	M	M	M	■ M, L	M	M	
Probe flexibility: semi-rigid (R), flexible (F), or fiberglass (G) for spooled, long-length applications	F	R	R	R	R	R	R	R	■ R, F, G	F	F	

KEY

- Standard feature
- ▲ This display unit supports this feature using optional accessories
- This optional accessory can be used to support or expand this feature.

Upgradable Versatility by Design

The HDV600 series is designed with capabilities and accessories to give you a rolling start while still permitting you to expand functionality as your needs change.

HDV640 Complete Kit



Job-Ready

HDV600 VideoScope kits include:

- Videoscope display unit
- Wired or wireless handset
- 1 m flexible or semi-rigid probe with macro optics
- 2GB SD memory card (supports up to 32GB SD storage)
- 3.7V rechargeable Li-Polymer battery
- Probe accessories: magnet, 45° mirror, and anti-snag tip
- Patch cable
- Universal AC adapter (110-240V, 4 plugs)
- USB and AV cables
- Hard carrying case

Optional Probes

HDV-5CAM -1FM	HDV-4CAM -3F	HDV-5CAM -3FM	HDV-5CAM -30FM	HDV-5CAM -10F	HDV-5CAM -1R	HDV-5CAM -1RM	HDV-5CAM -3R	HDV-5CAM -3RM	HDV-25CAM -10G	HDV-25CAM -30G
Expand your HDV600's versatility with additional non-articulated probes that connect to your display unit as well as wired/wireless handsets (non-articulated handsets only).										
1	3	3	30	10	1	1	3	3	10	30
5.5	5.5	5.5	5.5	5.5	5.8	5.8	5.8	5.8	25	25
M	L	M	M	L	L	M	L	M	L	L
F	F	F	F	F	R	R	R	R	G	G

M Macro Lens
L Long Focal Length Lens

R Semi-rigid Probe
F Flexible Probe

G Fiberglass Probe

Customizable

You may also configure customized solutions by starting with an HDV600 display unit (no probe included) and selecting optional probes and/or handsets listed above.



**HDV600
Display Unit**

Expandable

Are your inspections changing? Is your business growing? The HDV600 series grows with you.

You can order:

- Wired and wireless handsets (standard and articulating)
- Wireless receiver for PC viewing and web streaming
- Probes with different lengths, optics diameters, or flexibility



Ordering Information

HDV600 models are available from authorized Extech distributors. To learn more, or to find a distributor, please visit www.extech.com/hdv600.

Video Inspection Camera Kits

HDV610	High definition videoscope (5.5mm diameter camera with macro lens/1m flexible cable)
HDV620	High definition videoscope (5.8mm diameter camera with macro lens/1m semi-rigid cable)
HDV640	High definition articulating videoscope (6mm diameter camera with macro lens/1m semi-rigid cable)
HDV640W	High definition wireless articulating videoscope (6mm diameter camera with macro lens/1m semi-rigid cable)

Video Inspection Display Unit (order probes and handsets separately)

HDV600	High definition videoscope display unit (monitor, hard case and related accessories only)
--------	---

Handsets & Accessories

HDV-TX1	6mm articulating handset with probe with macro lens (1m semi-rigid cable)
HDV-WTX1	6mm wireless articulating handset with probe with macro lens (1m semi-rigid cable)
HDV-TX2	6mm articulating handset with probe with macro lens (2m semi-rigid cable)
HDV-WTX2	6mm wireless articulating handset with probe with macro lens (2m semi-rigid cable)
HDV-WTX	Wireless handset (accepts all optional probes below)
BRD10	USB wireless video receiver (For use with HDV640W or any model using the HDV-WTX wireless handset)
HDV-PC	Spare patch cable for HDV600 series handsets

Optional Probes

HDV-4CAM-1FM	4mm videoscope probe with macro lens (1m flexible cable)
HDV-4CAM-5FM	4mm videoscope probe with macro lens (5m flexible cable)
HDV-5CAM-1FM	5.5mm videoscope probe with macro lens (1m flexible cable)
HDV-5CAM-3F	5.5mm videoscope probe with long depth of field lens (3m flexible cable)
HDV-5CAM-3FM	5.5mm videoscope probe with macro lens (3m flexible cable)
HDV-5CAM-30FM	5.5mm videoscope probe with macro lens (30m flexible cable)
HDV-5CAM-10F	5.5mm videoscope probe with long depth of field lens (10m flexible cable)
HDV-5CAM-1R	5.8mm videoscope probe with long depth of field lens (1m semi-rigid cable)
HDV-5CAM-1RM	5.8mm videoscope probe with macro lens (1m semi-rigid cable)
HDV-5CAM-3R	5.8mm videoscope probe with long depth of field lens (3m semi-rigid cable)
HDV-5CAM-3RM	5.8mm videoscope probe with macro lens (3m semi-rigid cable)
HDV-25CAM-10G	25mm videoscope probe with long depth of field lens (10m fiberglass cable)
HDV-25CAM-30G	25mm videoscope probe with long depth of field lens (30m fiberglass cable)

About Extech Instruments

Extech Instruments is recognized as the source for the best handheld test and measurement tools worldwide. Founded in 1971, Extech is known for its depth and breadth of innovative inspection tools, testers, and meters suited for electrical, HVAC, building/restoration, and other industries. Extech also offers a host of environmental testers for measurement of sound, light, humidity and other parameters. All Extech tools are distributed worldwide through leading representatives, distributors and OEMs. The company is headquartered in the Nashua, New Hampshire, United States and is ISO 9001:2008 certified. Extech is a division of FLIR Commercial Systems, Inc.

Distribuito da:
Zetalab s.r.l.

Via Umberto Giordano, 5 - 35132 Padova
Tel 049 2021144 - Fax 049 2021143
www.zetalab.it - email: info@zetalab.it

Zetalab.it