

EL-WiFi-Alert

Standalone Audible and Visual Alert

- Detects alarms from any FilesThruTheAir™ WiFi sensor device on the same wireless network
- Audible alarm with built-in speaker (SPL 100dBA @1m)
- Visual alarm from high brightness LEDs
- Continues to work when the PC is turned off
- Easy set-up using free PC software application

The EL-WiFi-Alert is a standalone monitoring system for all sensor devices in the EasyLog WiFi range. The EL-WiFi-Alert will receive alarm messages from any EasyLog WiFi sensor device connected to the same wireless network. The EL-WiFi-Alert indicates an alarm activation using high brightness LEDs and a choice of nine alarm tones. The EL-WiFi-Alert continues to work when the PC is turned off.

The EL-WiFi-Alert has been designed to be continuously powered via the mains and it is supplied with a choice of UK, EU or US power adaptor. However it does contain a rechargeable lithium polymer battery for device positioning and limited power during the event of a mains failure.

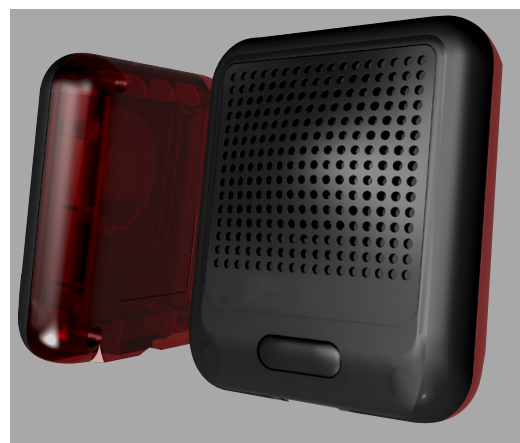
The WiFi signal strength indicator is activated by pressing the EL-WiFi-Alert button three times. All LEDs and a fast beep indicate a strong signal. Limited LEDs and slow beep indicate a weak signal.

The audible alarm can be muted by pressing the EL-WiFi-Alert button once or remotely using the PC software. There is also a configurable auto-mute function.

Set-up is completed through software installed on the PC. This software is available to download for free from www.easylogwifi.com. Free firmware downloads are also available from the same web page.

The EL-WiFi-Alert can be attached to a wall or flat surface using the bracket provided, and has a protection rating of IP44 (with cable connected).

This device is IEEE 802.11b compliant, supports WEP, WPA/WPA2 and enterprise networks.



SPECIFICATIONS

	Minimum	Typical	Maximum	Unit
USB supply voltage	4.5	5	5.5	Vdc
Operating temperature range	-20 (-4)		+60 (+140)	°C (°F)
Sound output		100		dBA @ 1m
Dimensions	82 x 70 x 36mm (3.22 x 2.75 x 1.41")			

INCLUDED IN THE BOX

EL-WiFi Wall Bracket	Wall mounting bracket for EL-WiFi sensors
PSU-5VDC-USB-USA*	USB Mains Power Adapter for USA
PSU USB-UK*	USB Mains Power Adapter for UK
PSU USB-EU*	USB Mains Power Adapter for EU
CABLE USB A-MICRO B	USB Type A to Micro B

* Location Dependent



Distribuito da:

Zetalab s.r.l.

Via Umberto Giordano, 5 - 35132 Padova

Tel. 049/2021144 - Fax 049/2021143

www.zetalab.it - info@zetalab.it