

Formaldemeter htV-m

Formaldemeter htV-m

SPECIFICATION

Sampling Method: 10ml snatch-sample of air taken by internal pump.

Sampling Frequency: 1 minute in normal IAQ conditions.

Response Time: 60 seconds in 'high accuracy' mode, approx. 8 seconds in 'lower accuracy' mode.

Mechanical: 150 x 80 x 34mm ABS plastic case. Padded accessory-case 266 x 230 x 50mm.

Weight: 270g with 9v PP3 alkaline battery
Total kit weighs 750g.

FORMALDEHYDE SENSOR

Type: Electrochemical manufactured by PPM Technology.

Range: 0-10ppm as standard (0- 12.3 mg/m³ at 25 °C). Extended range available on request.

Resolution: 0.001 ppm

Precision: 2%

Accuracy: 94% of all instrument readings meet the NIOSH criteria for an acceptable method when measuring 0.3ppm of formaldehyde over a relative humidity range of 25-70%. The NIOSH criterion for acceptability is that all results fall within $\pm 25\%$ of the true value at the 95% confidence level.

Calibration: By user with supplied calibration standard or by original manufacturer.



With the subject of Indoor Air Quality becoming more prominent and recognized throughout many different industries, it has become essential to be able to accurately monitor low levels of indoor pollutant gases.

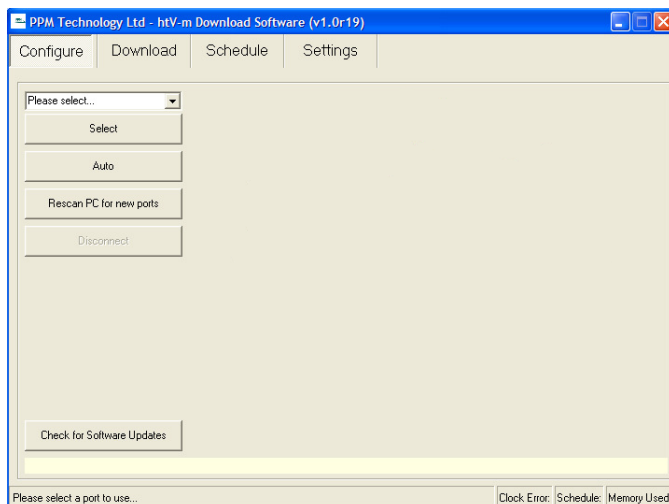
The Formaldemeter htV-M offers the same precise 3 parameter monitoring for low levels of hazardous formaldehyde vapors under extremes of temperature and humidity as seen in the world-wide success of the Formaldemeter htV but with the addition of these impressive extra features:

- A built in non-volatile memory that can be upgraded.
- Capable of up to one month of continuous monitoring.
- A real time clock.
- Built in alarm
- Mains or battery powered.
- Can be used as a manual hand held and a continuous monitoring data logger.
- An RS232 interface allowing direct connection to PC for data download or control by the SPC-3 program without the need for additional hardware.
- Supplied with the htV-M download software.
- Manufactured to ISO 9001:2000 quality standards and compliant to CE regulations.

The htV-M can precisely measure formaldehyde concentrations in parts per million (ppm) and mg/m³ over a wide range of temperature and humidity. Fast and easy to use, pressing a single button gives an immediate indication of concentration levels. The improved Formaldemeter htV-M is reliable and simple to calibrate. The compact size means the htV-m is small enough to be used as a hand held device.

The built in memory and real time clock enables the htV-m to log all 3 parameters and corresponding times, allowing improved monitoring and analysis opportunities. Alternatively a PC can automate the sampling and log data at specific times by a direct or wireless connection. This is advantageous as it allows the user more freedom and is a cost effective approach to taking such measurements.

htV-m Download Software

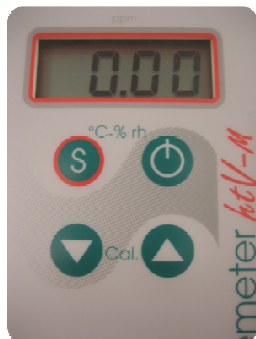


The htV-m download software allows you to download sample data from the Formaldemeter htV-m unit quick and easily.

The software features the ability to adjust the sampling schedule to your desired setting. Schedule time and frequency of samples can all be changed using the simple and intuitive interface.

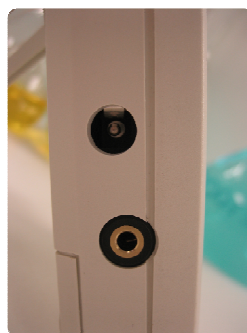
Sample data can be downloaded and saved in a variety of formats.

Features



The Formaldemeter htV-M has the same simple 4 button layout as the htV, 400 and Glutaraldemeter units.

One button to turn on and another to sample. By pressing particular button combinations together, the user can access temperature and humidity readings, check the gain and also calibrate the unit with the provided Formaldehyde standard.



The built in DC socket allows the htV-M to be powered by the mains if used as a continuous data logger, so as to save the internal battery of the unit.

The 3.5mm jack, provides a means of downloading sample data via an RS-232 connection to the PC. This connection can also be used with the SPC-3 system for continuous monitoring.



A simple fold out stand allows the htV-M to sample in an upright position, while also providing a better viewing angle for checking formaldehyde levels on the display.

TEMPERATURE & HUMIDITY MODULE

Type: Interchangeable digital CMOSens®

Range: -40 to +128 °C, 0–100% RH

Accuracy: ±0.4 °C, ±3% RH
Optional upgrade to ±0.3 °C, ±1.8% RH

Calibration: Calibrated to ISO/IEC17025 by manufacturer. Traceable by the 'National Institute of Standards and Technology' and the 'National Physical Laboratory'.

KIT CONTENTS

- Formaldemeter htV-M instrument with battery
- Formaldehyde calibration standard tube
- RS232 Cable with USB adapter
- Pack of phenol filters (10)
- Digital copy of manual
- Mains Adapter
- Download Software



Distribuito da:
Zetalab s.r.l.
Via Castelfidardo, 11 - 35141 Padova
Telefono 049 2021144 - Fax 049 2021143
Internet: www.zetalab.it - e-mail: info@zetalab.it